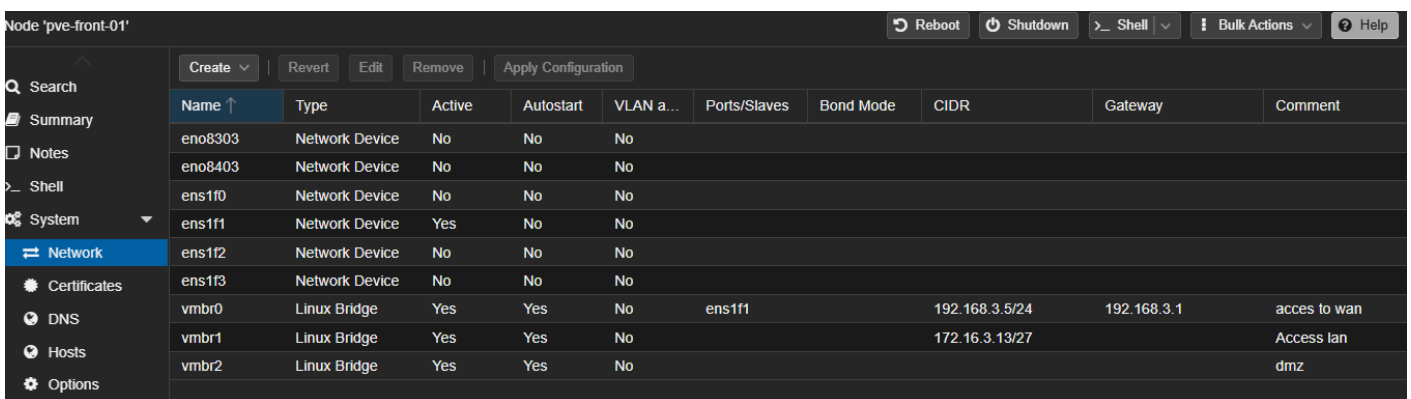


Proxmox LDAP Initialisation

Prérequis:

- Avoir un active directory joignable depuis le proxmox (ping pve vers ad)
- Avoir une adresse IP sur vmbr0 et vmbr1
- avoir un utilisateur bind_proxmox sur l'active directory

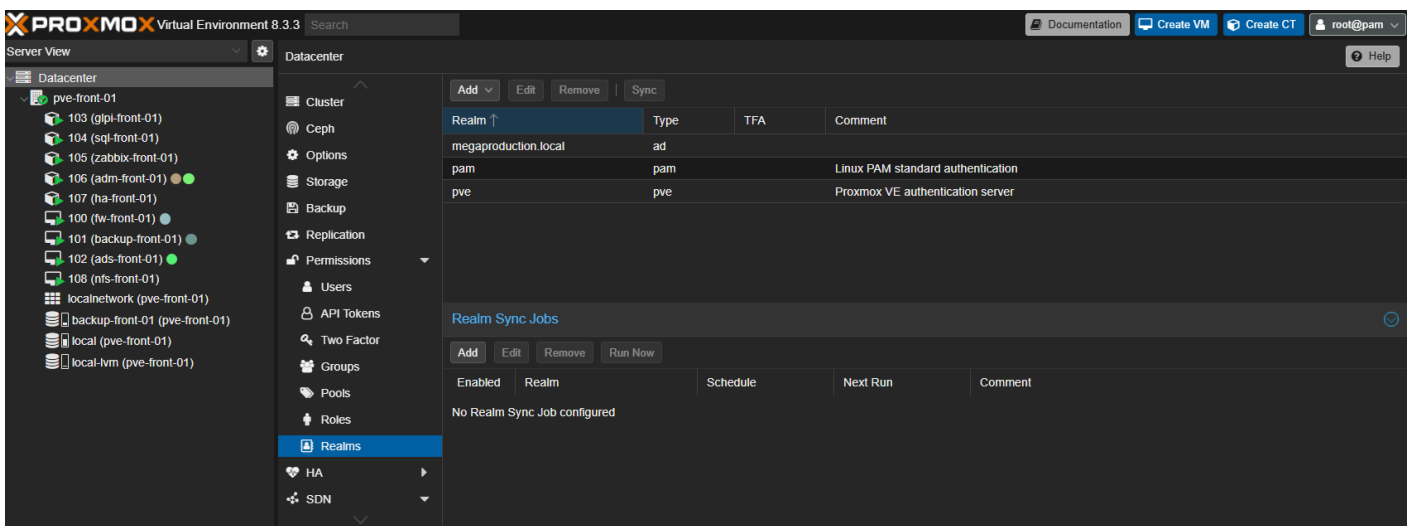
Adresse IP sur la WAN et la LAN



The screenshot shows the Network configuration page in Proxmox VE. The 'Network' tab is selected, displaying a table of network devices and bridges. The table has columns for Name, Type, Active, Autostart, VLAN a..., Ports/Slaves, Bond Mode, CIDR, Gateway, and Comment.

Name ↑	Type	Active	Autostart	VLAN a...	Ports/Slaves	Bond Mode	CIDR	Gateway	Comment
eno8303	Network Device	No	No	No					
eno8403	Network Device	No	No	No					
ens1f0	Network Device	No	No	No					
ens1f1	Network Device	Yes	No	No					
ens1f2	Network Device	No	No	No					
ens1f3	Network Device	No	No	No					
vmbr0	Linux Bridge	Yes	Yes	No	ens1f1		192.168.3.5/24	192.168.3.1	access to wan
vmbr1	Linux Bridge	Yes	Yes	No			172.16.3.13/27		Access lan
vmbr2	Linux Bridge	Yes	Yes	No					dmz

Aller dans datacenter puis realms :



The screenshot shows the Datacenter configuration page in Proxmox VE, specifically the Realms section. The 'Realms' tab is selected, displaying a table of realms. The table has columns for Realm, Type, TFA, and Comment.

Realm ↑	Type	TFA	Comment
megaproduction.local	ad		
pam	pam		Linux PAM standard authentication
pve	pve		Proxmox VE authentication server

Below the table, there is a section for 'Realm Sync Jobs' with buttons for 'Add', 'Edit', 'Remove', and 'Run Now'. A table below this section shows 'Enabled', 'Realm', 'Schedule', 'Next Run', and 'Comment' columns, with the message 'No Realm Sync Job configured'.

Cliquer sur add, active directory server:

Add: Active Directory Server ✕

General Sync Options

Realm:	<input type="text" value="megaproduction.local"/>	Server:	<input type="text" value="172.16.3.6"/>
Domain:	<input type="text" value="megaproduction.local"/>	Fallback Server:	<input type="text"/>
Case-Sensitive:	<input type="checkbox"/>	Port:	<input type="text" value="Default"/>
Default:	<input type="checkbox"/>	Mode:	<input type="text" value="Default (LDAP)"/>
		Verify Certificate:	<input type="checkbox"/>
		Require TFA:	<input type="text" value="none"/>

Comment:

Check connection:

Help Advanced Add

dans le bind user mettre :

CN=bind_pfsense,OU=CONNECTEURS,OU=MEGAPRODUCTION,OU=UTILISATEURS,DC=megaproduction,DC=local --> [a modifier selon votre ad](#)

dans le doute mettre le bind password

Edit: Active Directory Server

General **Sync Options**

Bind User: CN=bind_pfsense,OU=CON User classes: inetorgperson, posixaccount

Bind Password: Unchanged Group classes: groupOfNames, group, unix

E-Mail attribute: User Filter:

Groupname attr.: Group Filter:

Default Sync Options

Scope: None Enable new users: Yes (Default)

Remove Vanished Options

ACL: Remove ACLs of vanished users and groups.

Entry: Remove vanished user and group entries.

Properties: Remove vanished properties from synced users.

Help Advanced OK

Puis creer une synchronisation automatique:

Create: Realm Sync Job

Realm: megaproduction.local Scope: Users and Groups

Schedule: */2:00 Enable New: Yes

Enable Job:

Remove Vanished Options

ACL: Remove ACLs of vanished users and groups.

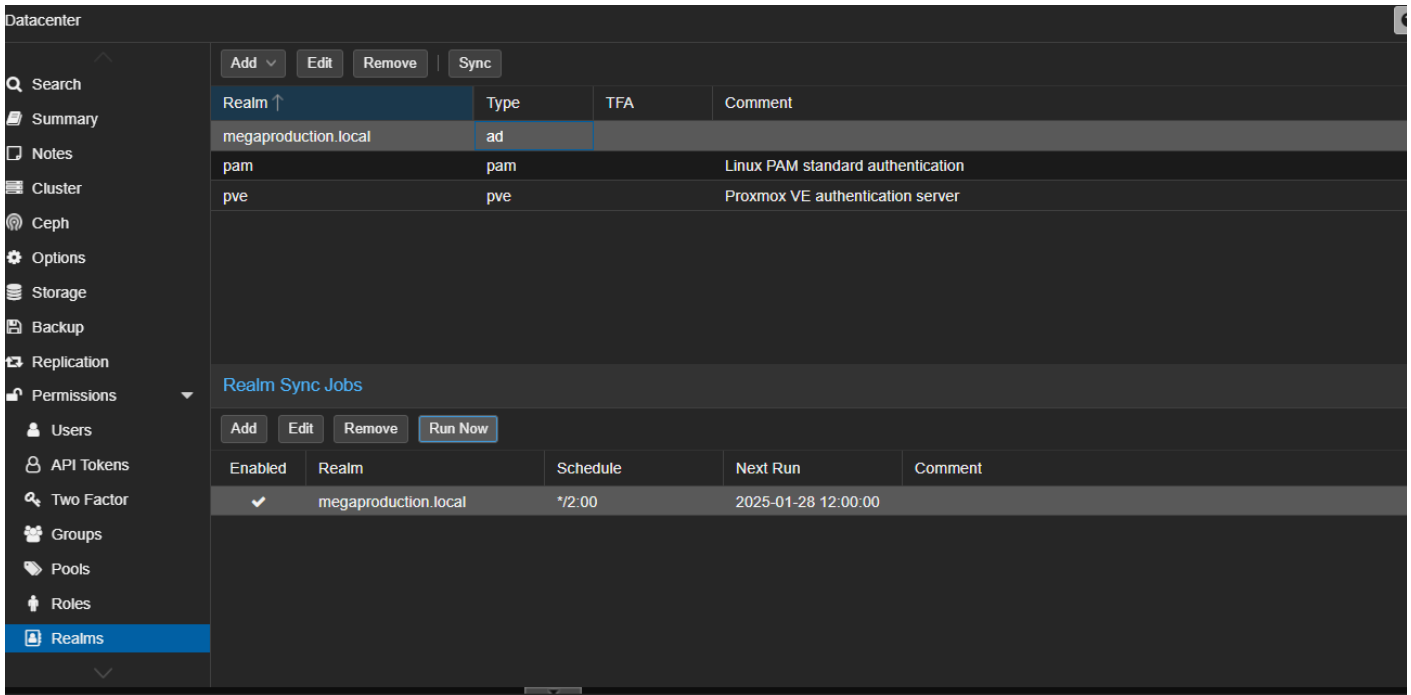
Entry: Remove vanished user and group entries.

Properties: Remove vanished properties from synced users.

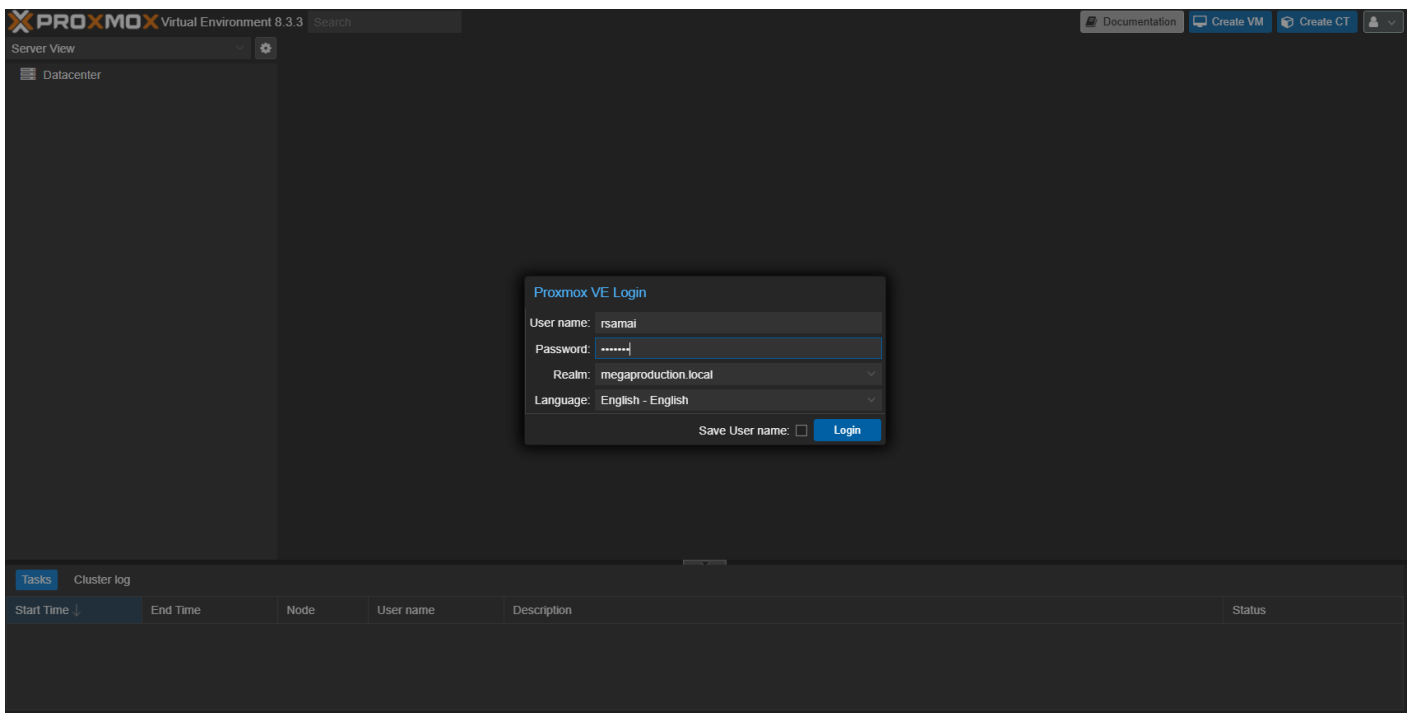
Job Comment:

Help Create

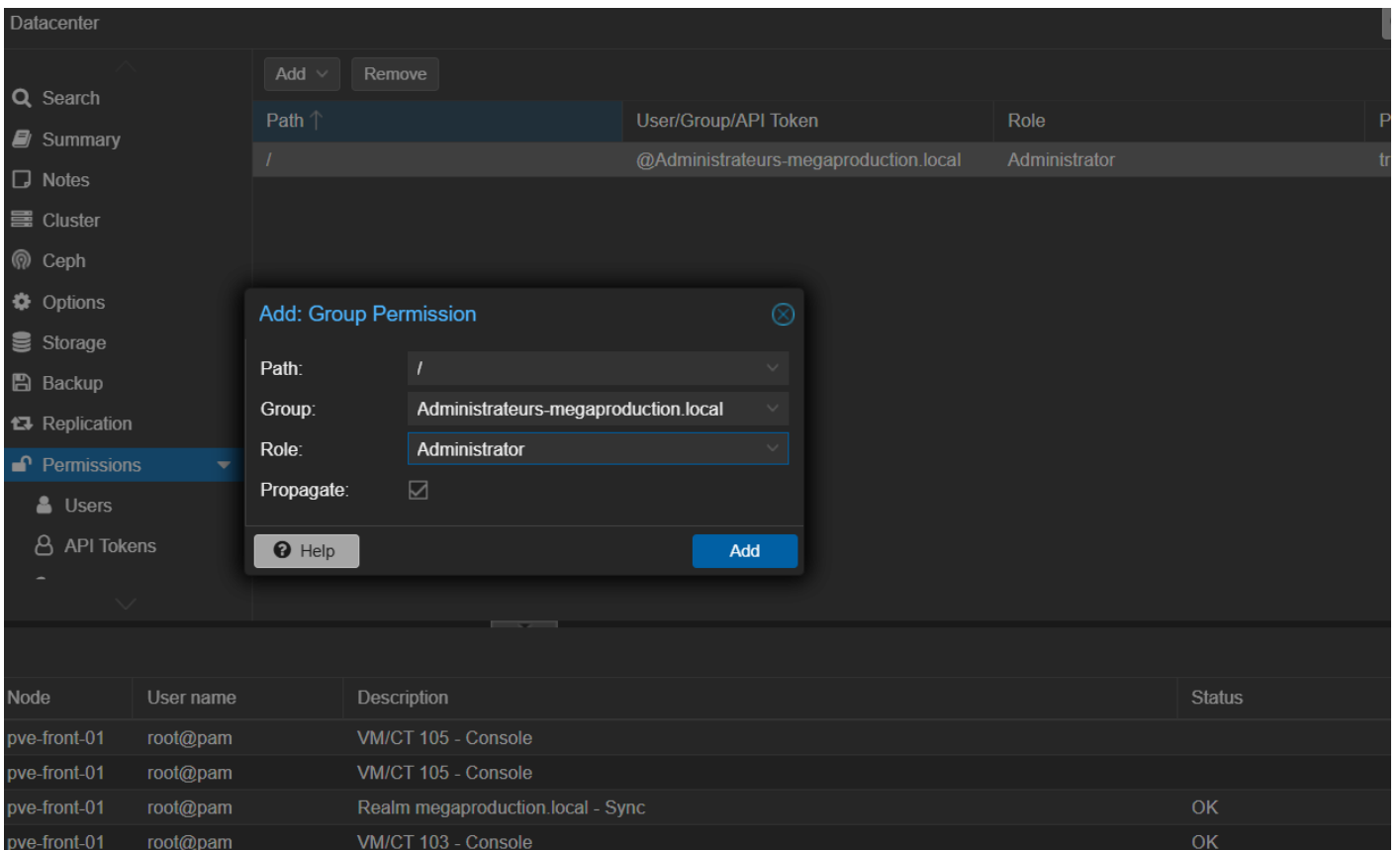
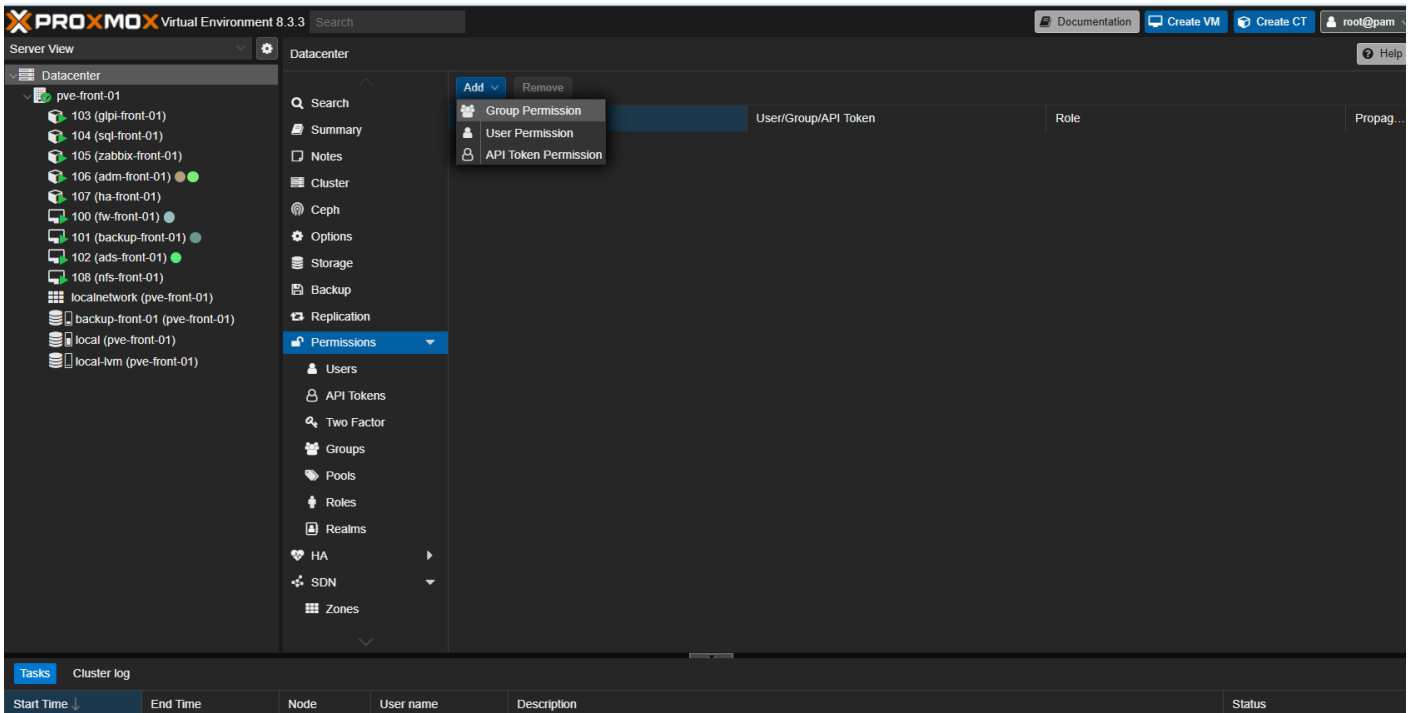
Pour tester la connexion cliquer sur run now, si aucune erreur = sa marche



verifier la connexion en se connectant bien sur le realm megaproduction.local



Une fois que vous pouvez vous connecter il faut ajouter les permissions a vos utilisateur :



une fois les permission donnée c'est tout bon vous avez acces a vos machines sur vos comptes proxmox

Revision #15

Created 2025-01-28 08:54:27 UTC by rklz

Updated 2025-06-02 08:04:48 UTC by rklz