

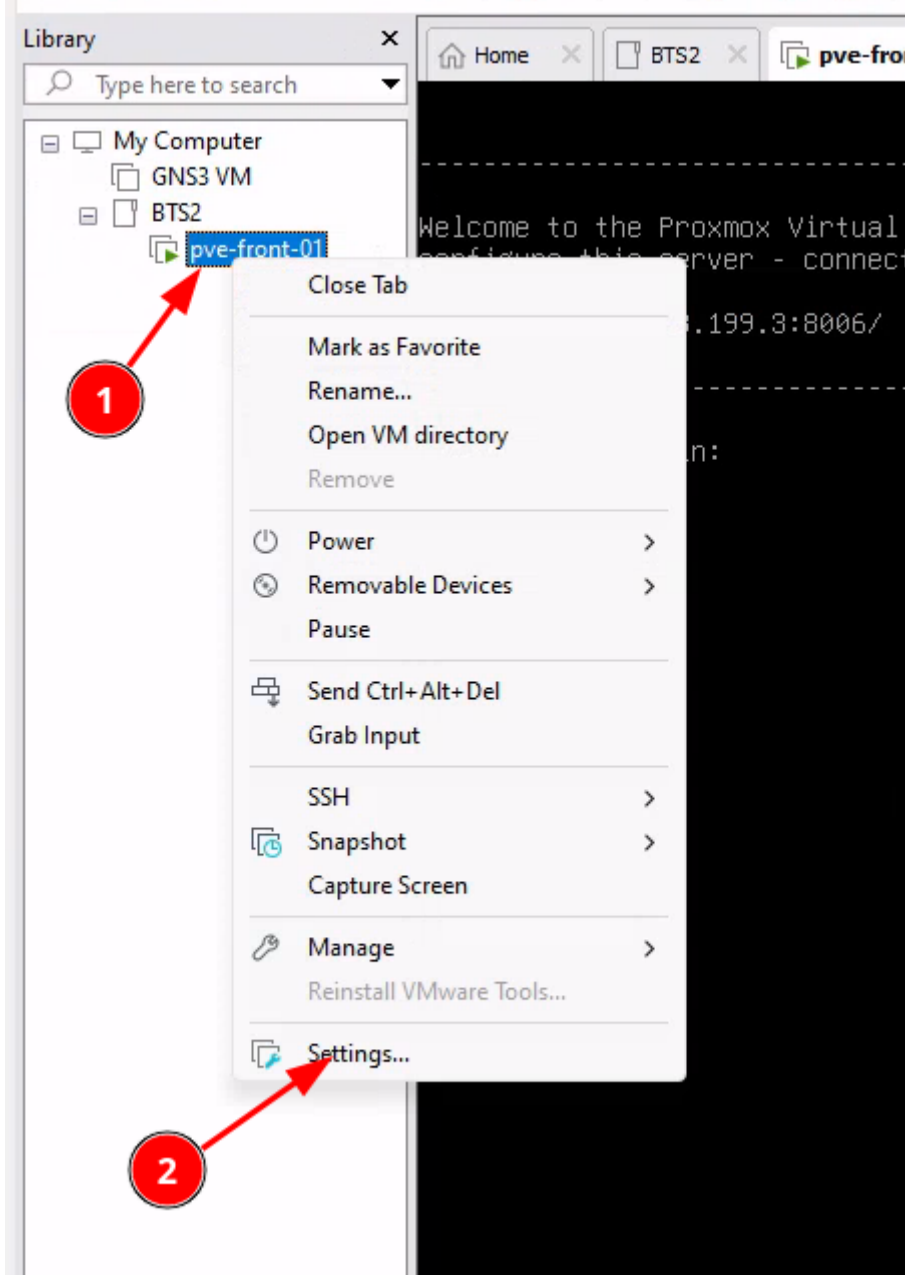
AJOUT DE STOCKAGE

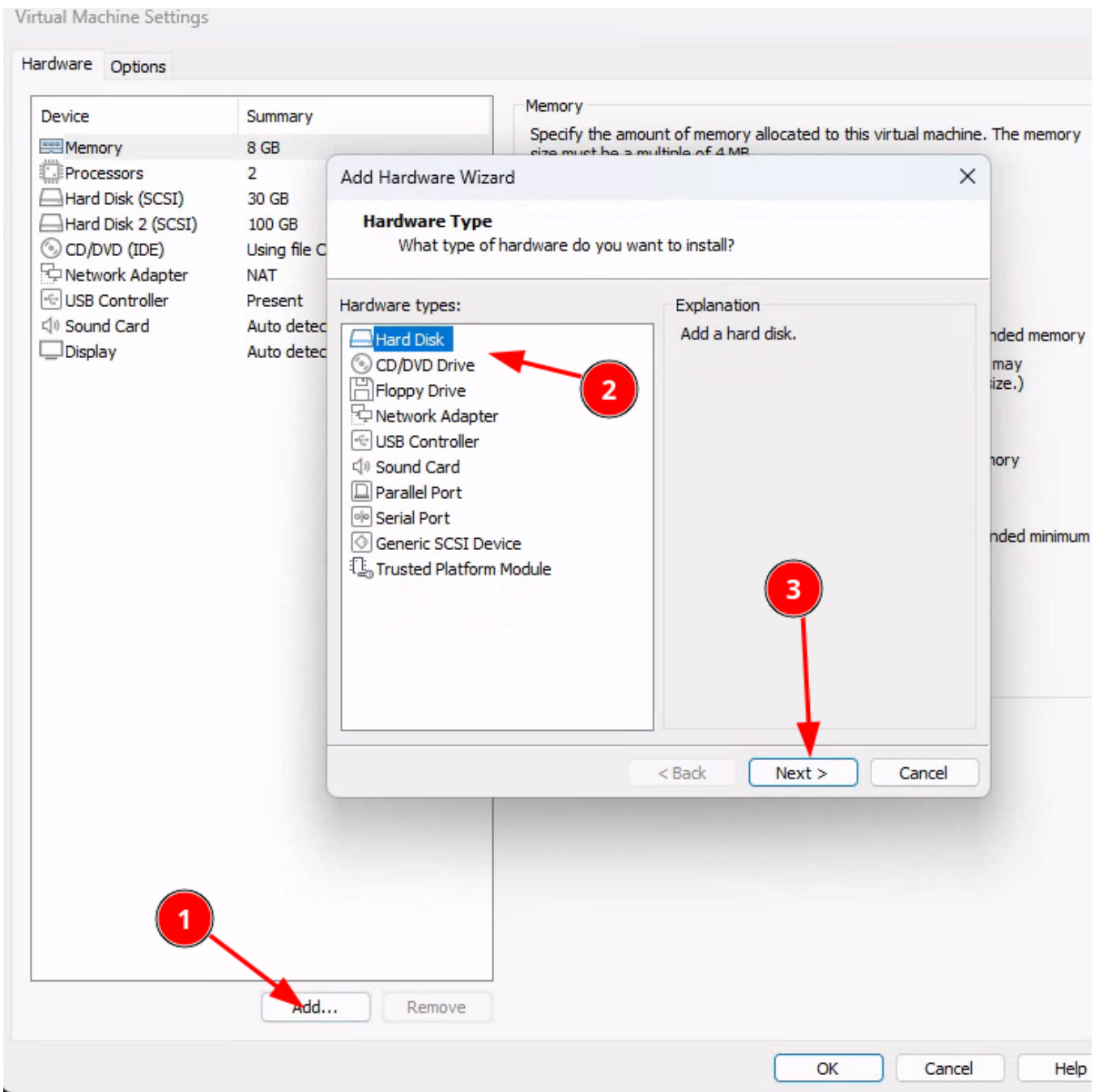
Prérequis

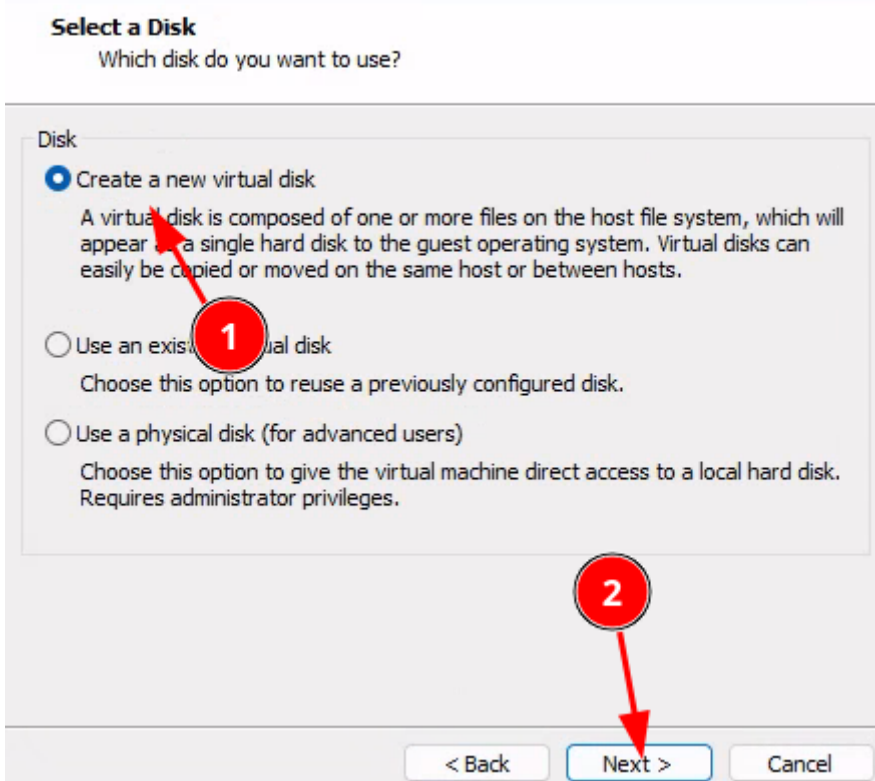
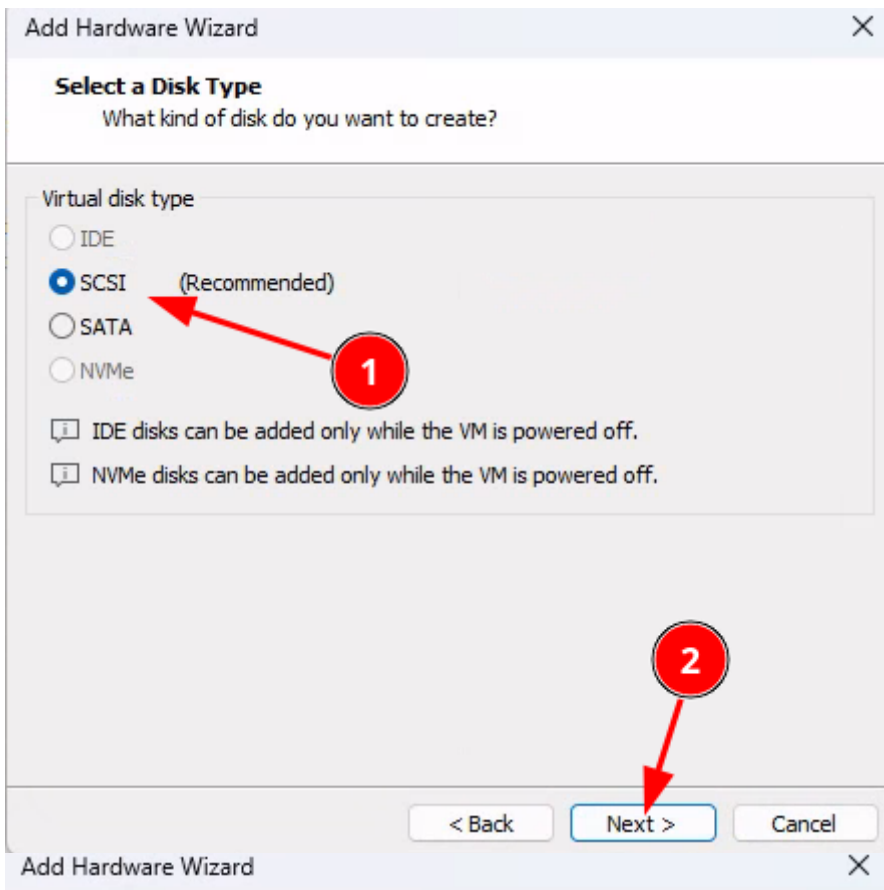
- Avoir un proxmo
- Avoir de l'espace sur son disque

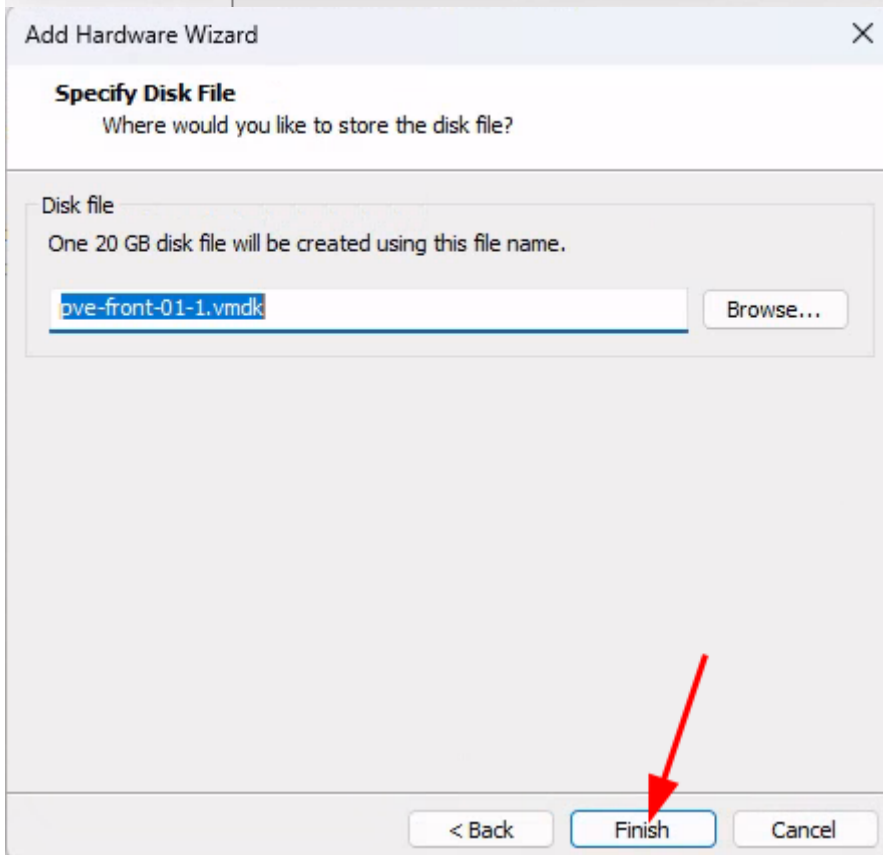
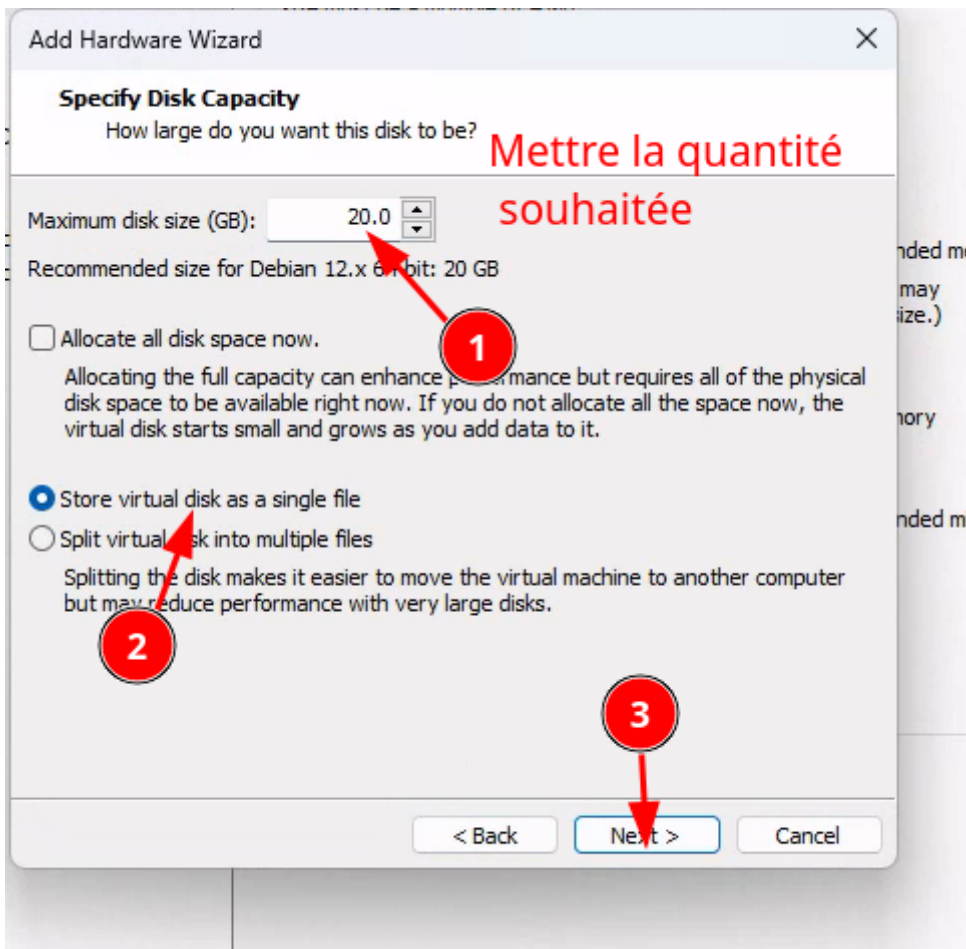
Ajout du disque sur le logiciel de virtualisation

- Ajout du disque

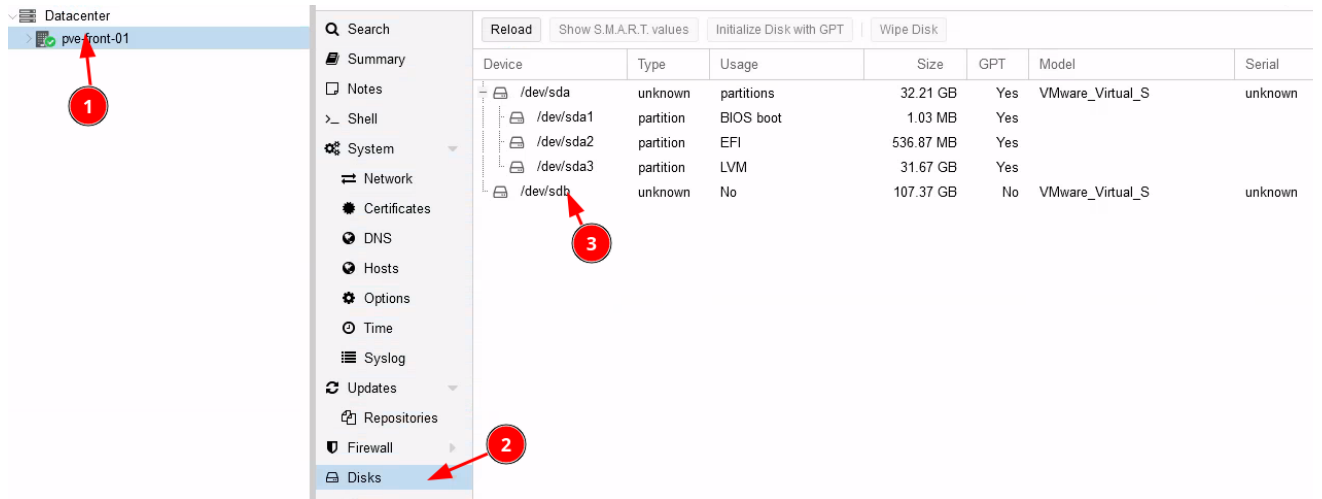




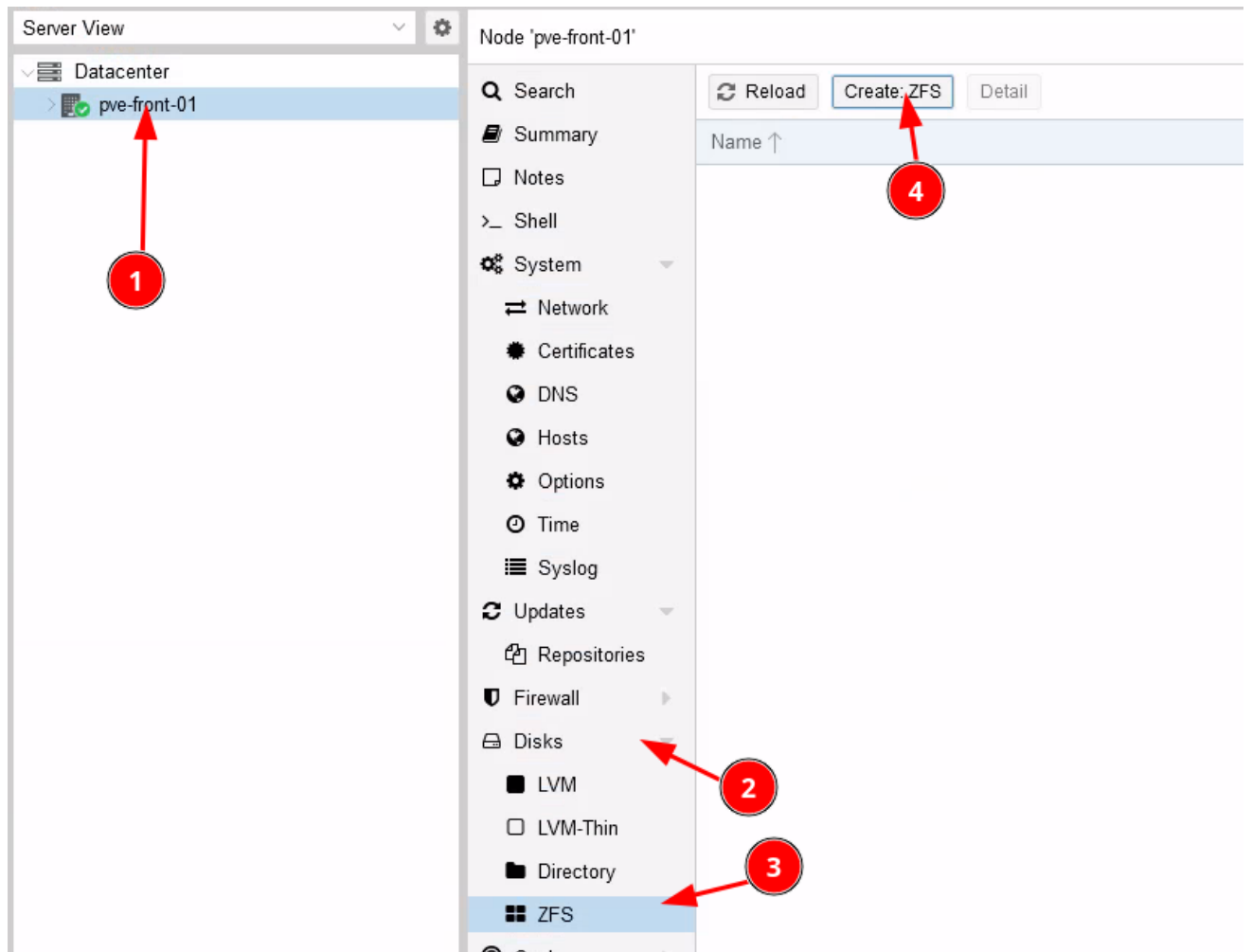




- Redémarrez le serveur Proxmox
- Paramétrez le nouveau disque dans la console web de Proxmox
 - Vérifiez que le disque est visible



- Paramétrez le nouveau disque en ZFS afin qu'il puisse servir de stockage pour les VMS



Create: ZFS

Name: RAID Level:

Add Storage: Compression:

ashift:

<input checked="" type="checkbox"/>	Device ↑	Model	Serial	Size	Order
<input checked="" type="checkbox"/>	/dev/sdb	VMware_Virtual_S	unknown	107.37 GB	

Note: ZFS is not compatible with disks backed by a hardware RAID controller. For details see [the reference documentation](#).

Name ↑	Size	Free
VMs_HDD	106.84 GB	106.84 GB

Le disque est créé !!

Revision #2

Created 2023-11-08 08:11:58 UTC by kvega

Updated 2023-11-08 08:34:27 UTC by kvega