

# Installation de GNS3 VM sur WINDOWS





## Prérequis

- Avoir un logiciel de virtualisation (Virtualbox ou VmWare Workstation)
- 2 processeur
- 4 GB de RAM pour la VM
- 35 GB de stockage

## Installation

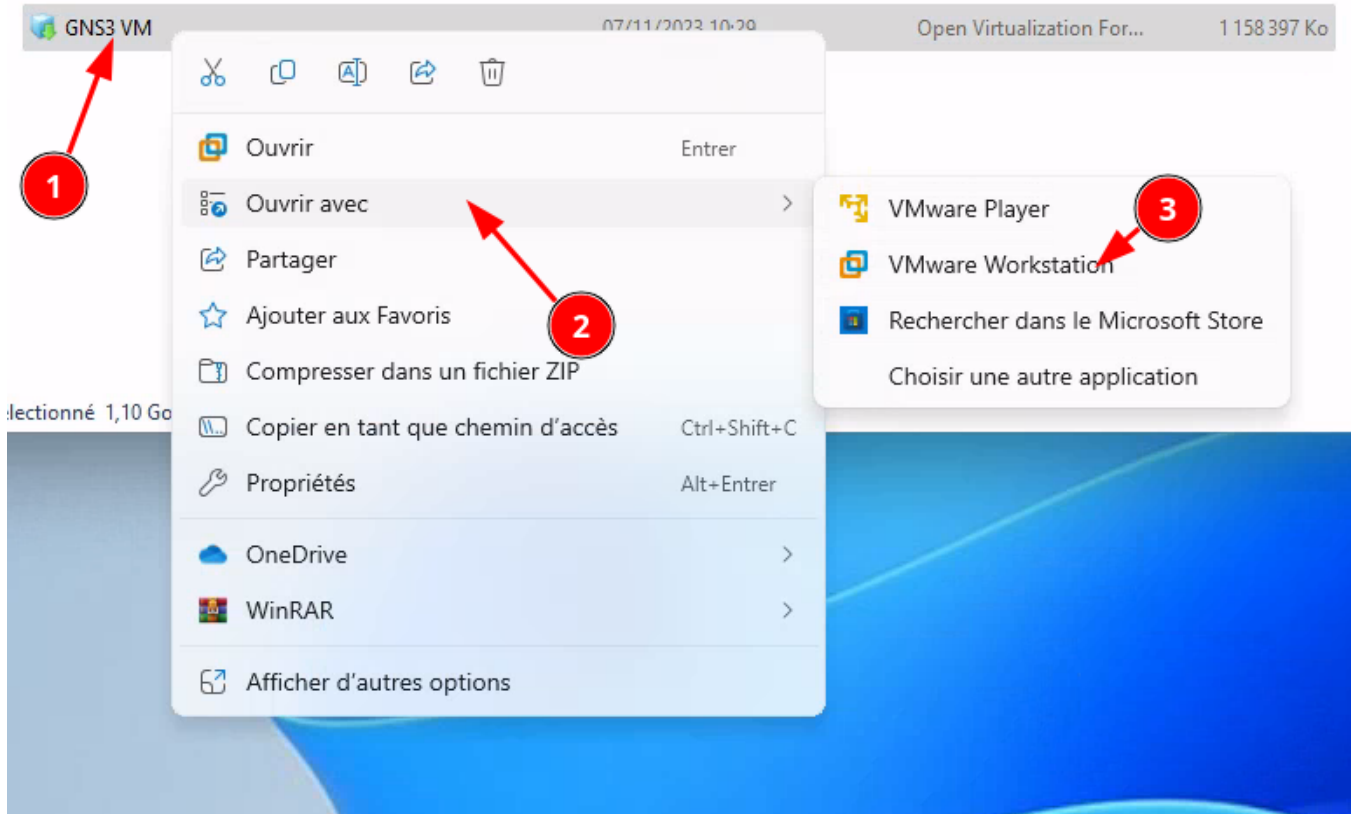
- Télécharger la bonne version de vm [GNS3 vm](#) (Selectionner la bonne version)



|   |  |                          |
|---|--|--------------------------|
|    | <b>VirtualBox</b><br>Version 2.2.44.1                    | <a href="#">Download</a> |
|  | <b>VMware Workstation and Fusion</b><br>Version 2.2.44.1 | <a href="#">Download</a> |
|  | <b>VMware ESXi</b><br>Version 2.2.44.1                   | <a href="#">Download</a> |
|  | <b>Microsoft Hyper-V</b><br>Version 2.2.44.1             | <a href="#">Download</a> |

[Learn more about the GNS3 VM](#)  
GNS3 is a Free and Open Source software under GPL v3 licensing

- Aller dans votre dossier de téléchargement et dézipper l'archive.
- Importez le .ova



- Attendez l'import
- Une fois importée, démarrez la Vm et accédez à la console pour y récupérer l'IP affichée

```
GNS3 server version: 2.2.44.1
Release channel: 2.2
VM version: 0.15.0
Ubuntu version: focal
Qemu version: 4.2.1
Virtualization: vmware
KVM support available: True
Uptime: up 0 minutes

IP: 192.168.95.128 PORT: 80

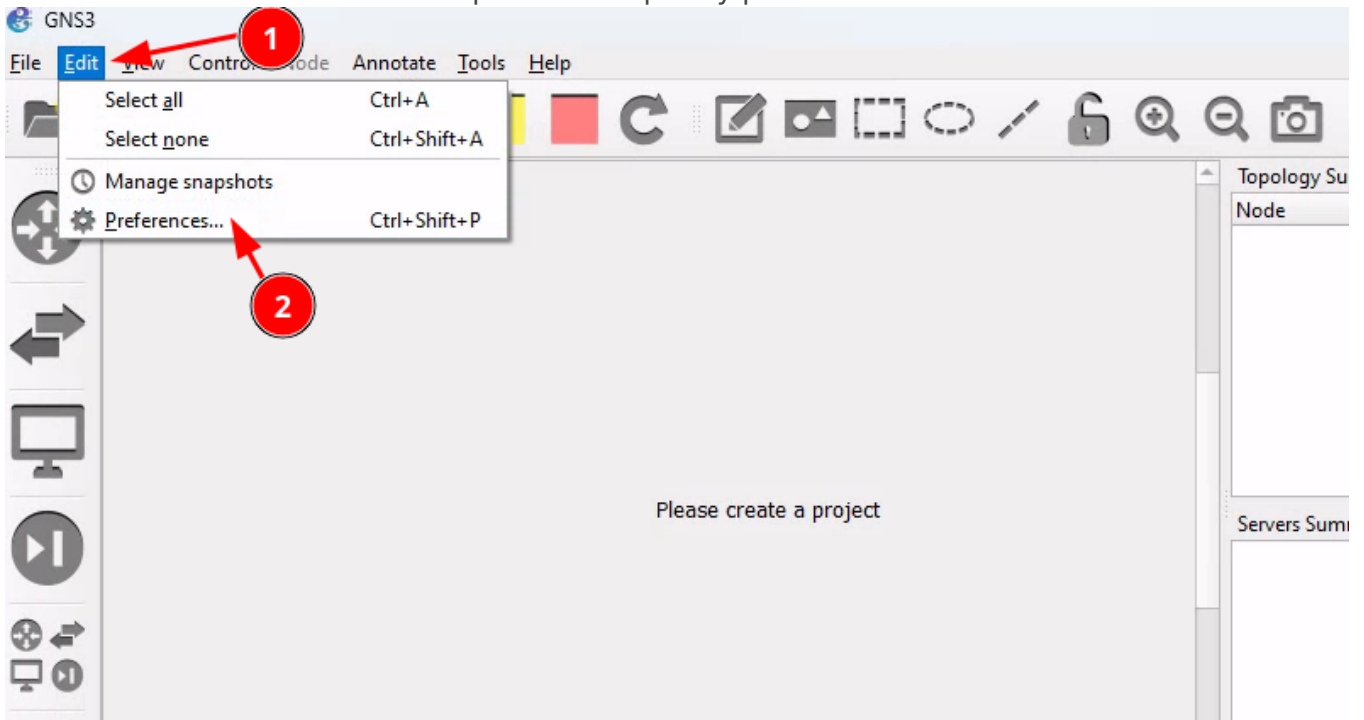
To log in using SSH: ssh gns3@192.168.95.128
Password: gns3

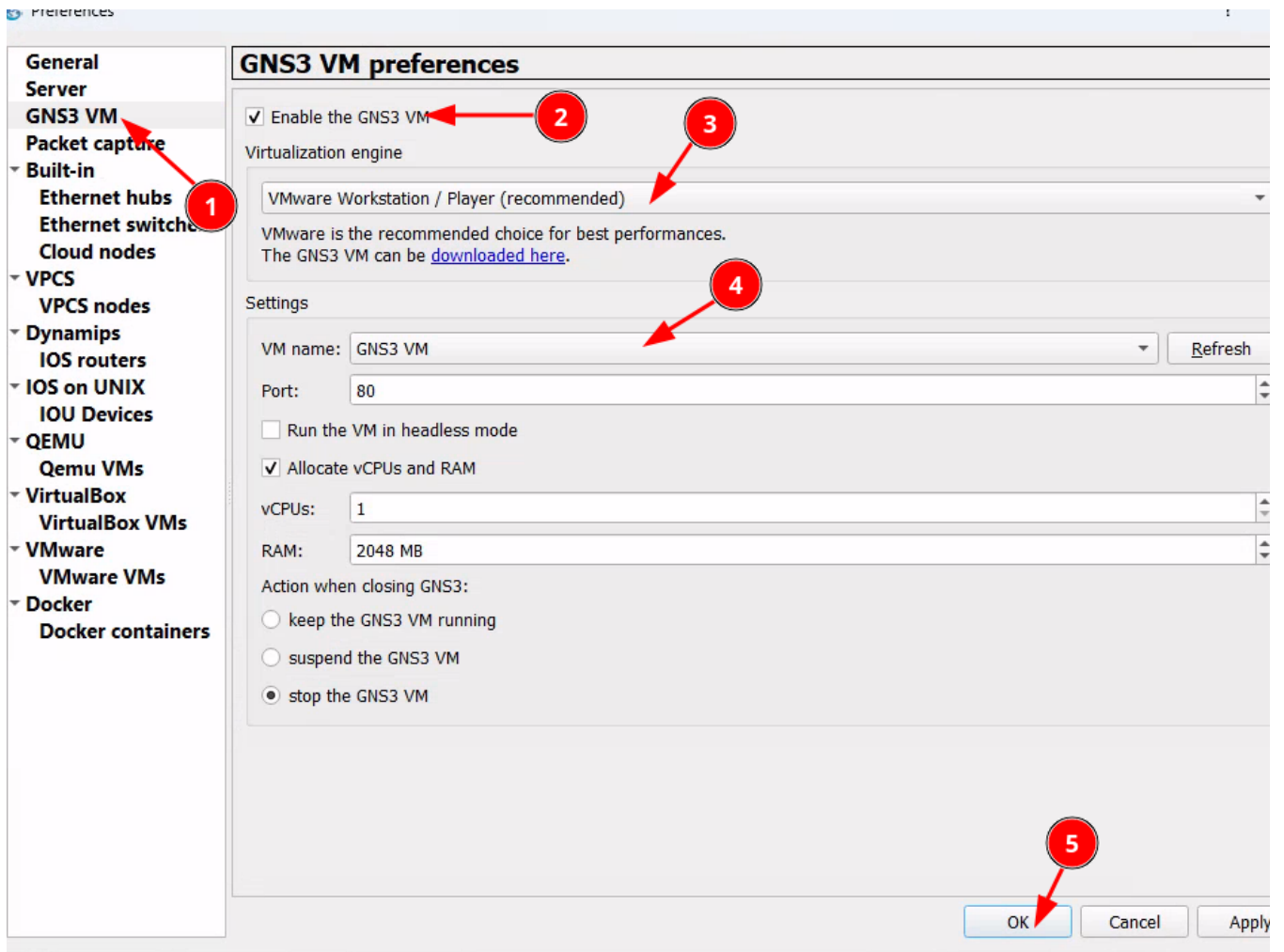
To launch the Web-Ui: http://192.168.95.128

Images and projects are stored in '/opt/gns3'
```

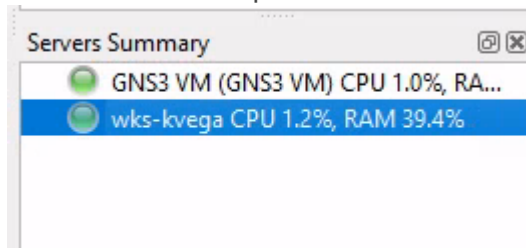
< OK >

- Démarrer GNS3 et allez dans les paramètres pour y paramétrer GNS3 VM





- Si tout c'est bien passé vous devriez voire apparaître le serveur local et la VM en vert



Revision #1

Created 2023-11-07 14:24:04 UTC by kvega

Updated 2023-11-07 16:01:05 UTC by kvega