

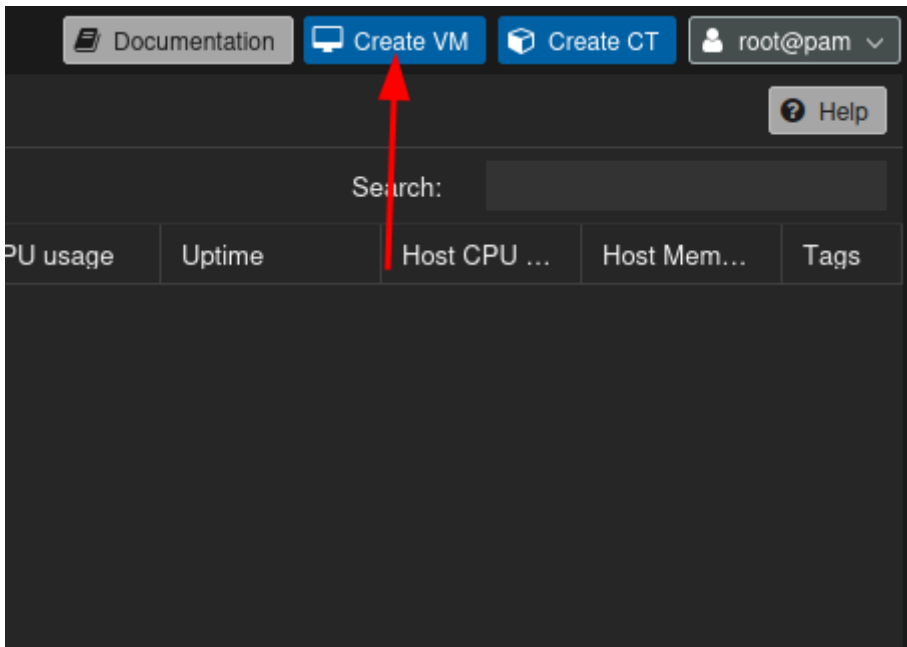
Installation de PFSENSE sur PROXMOX

Prérequis:

- Avoir PROXMOX installé
- Avoir l'ISO de Pfsense (<https://www.pfsense.org/download/>)
- Proxmox doit avoir accès à internet depuis proxmox

Création de la VM:

1. Créer la VM



2. Paramètres généraux

Create: Virtual Machine

General OS System Disks CPU Memory Network Confirm

Node: pve-front-01 Resource Pool:

VM ID: 100

Name: fw-front-01

Start at boot: Start/Shutdown order: any

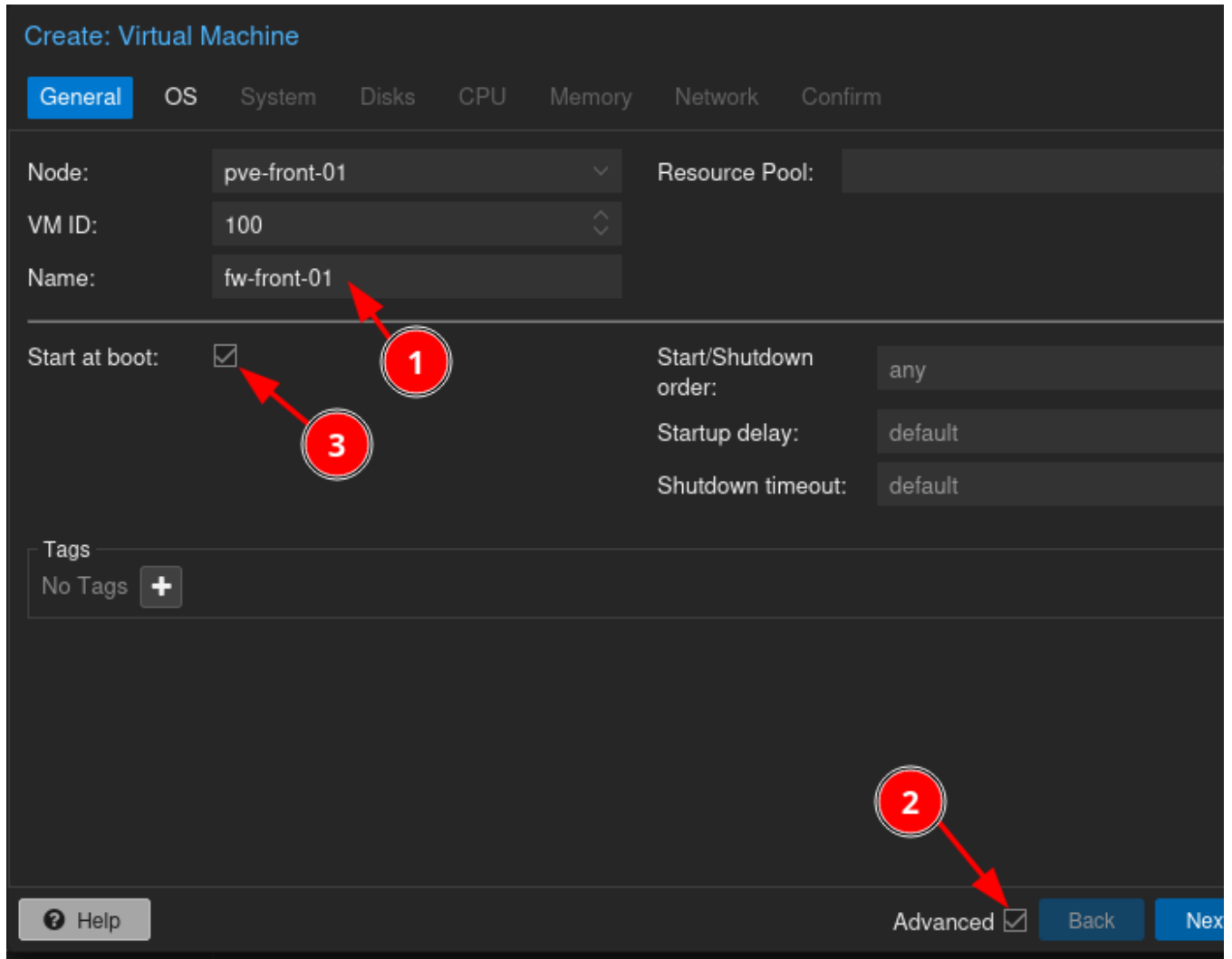
Startup delay: default

Shutdown timeout: default

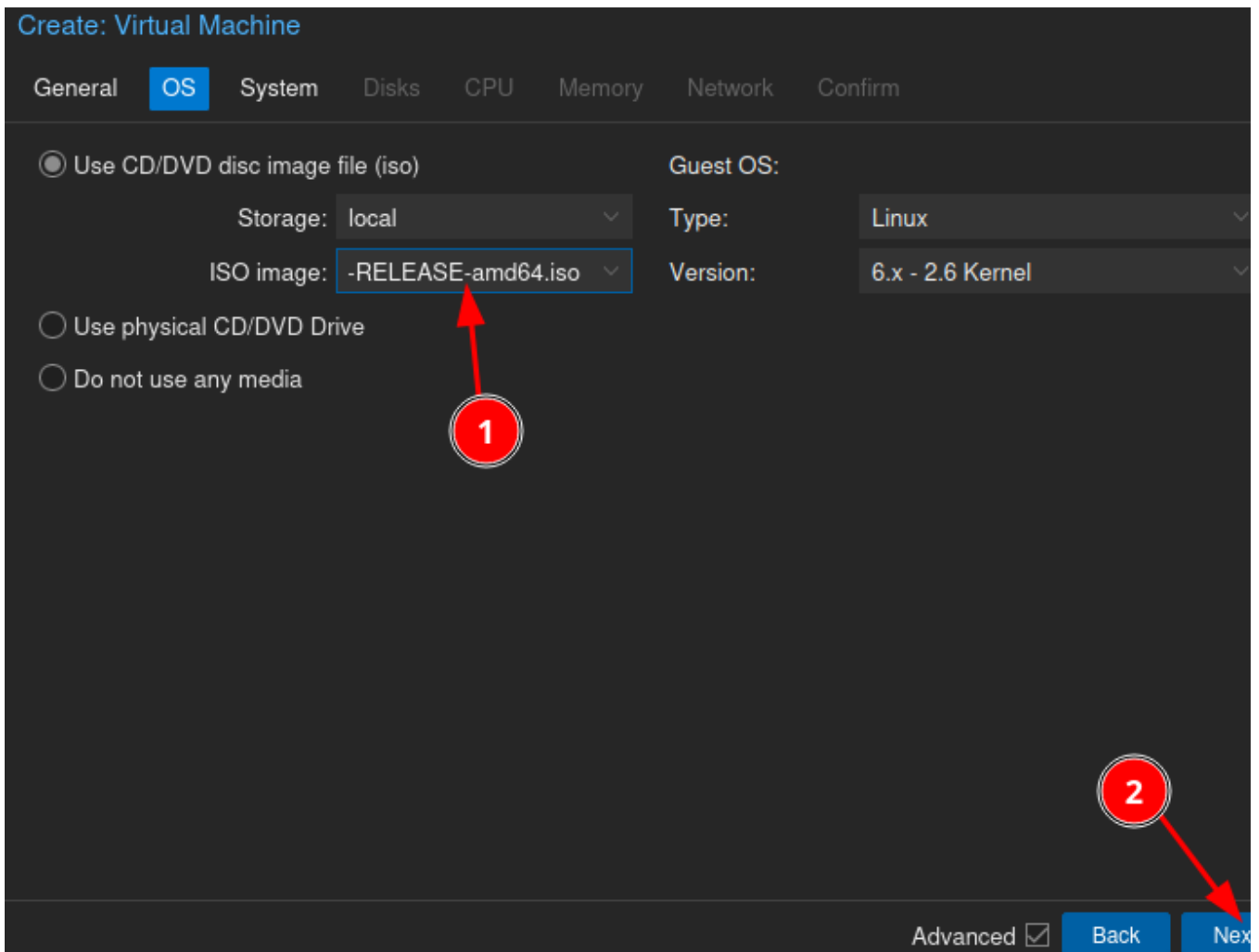
Tags

No Tags

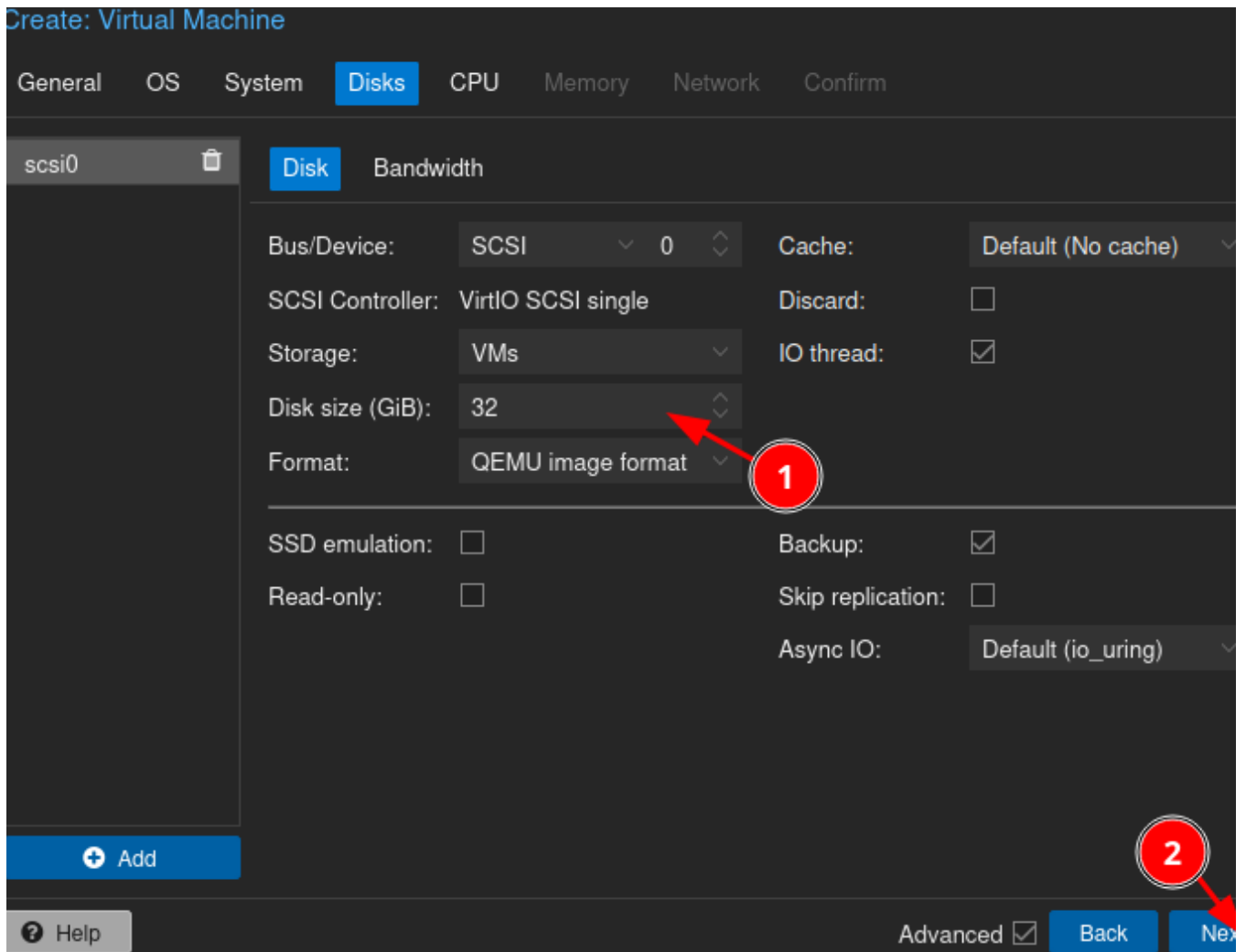
Advanced



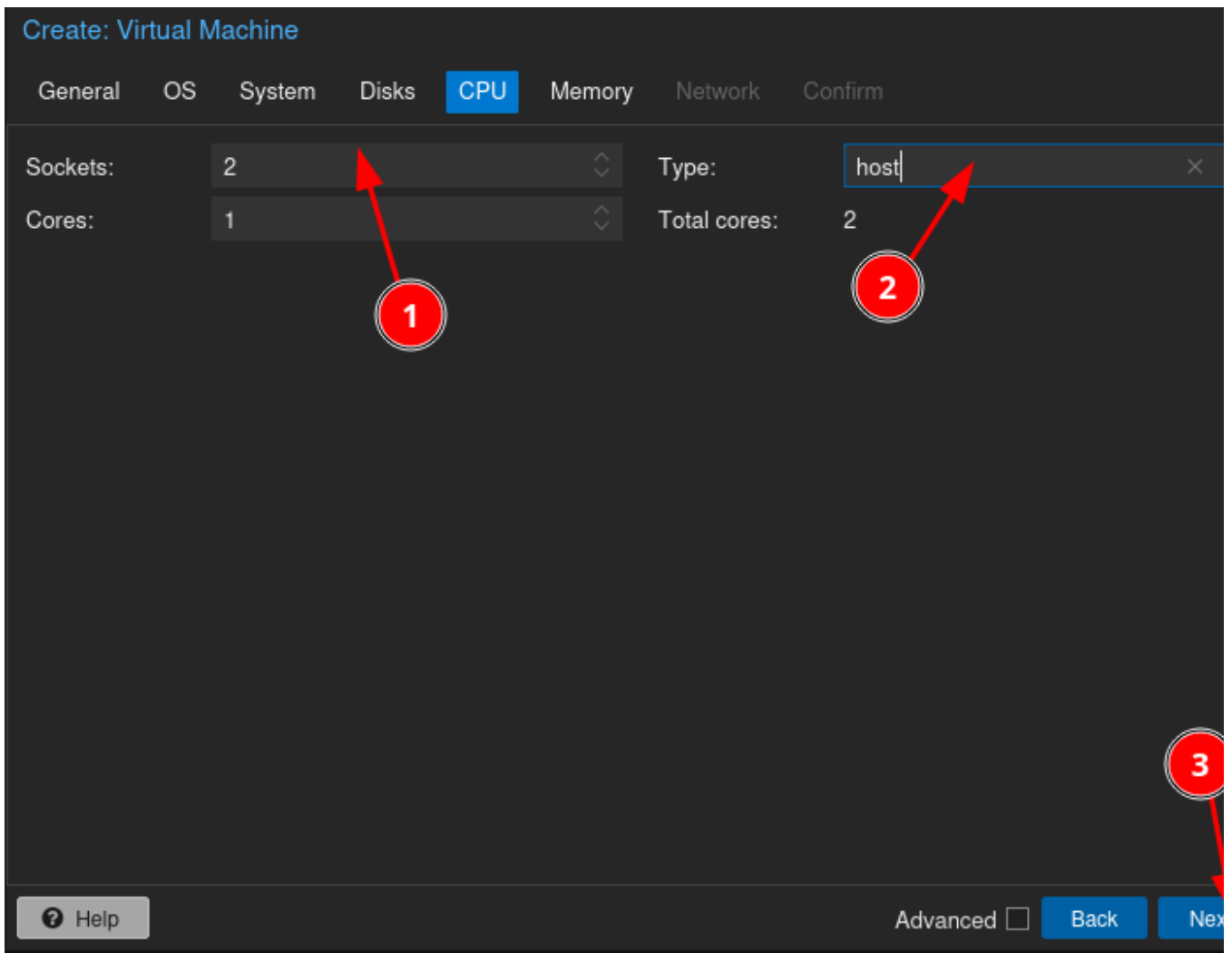
3. Os



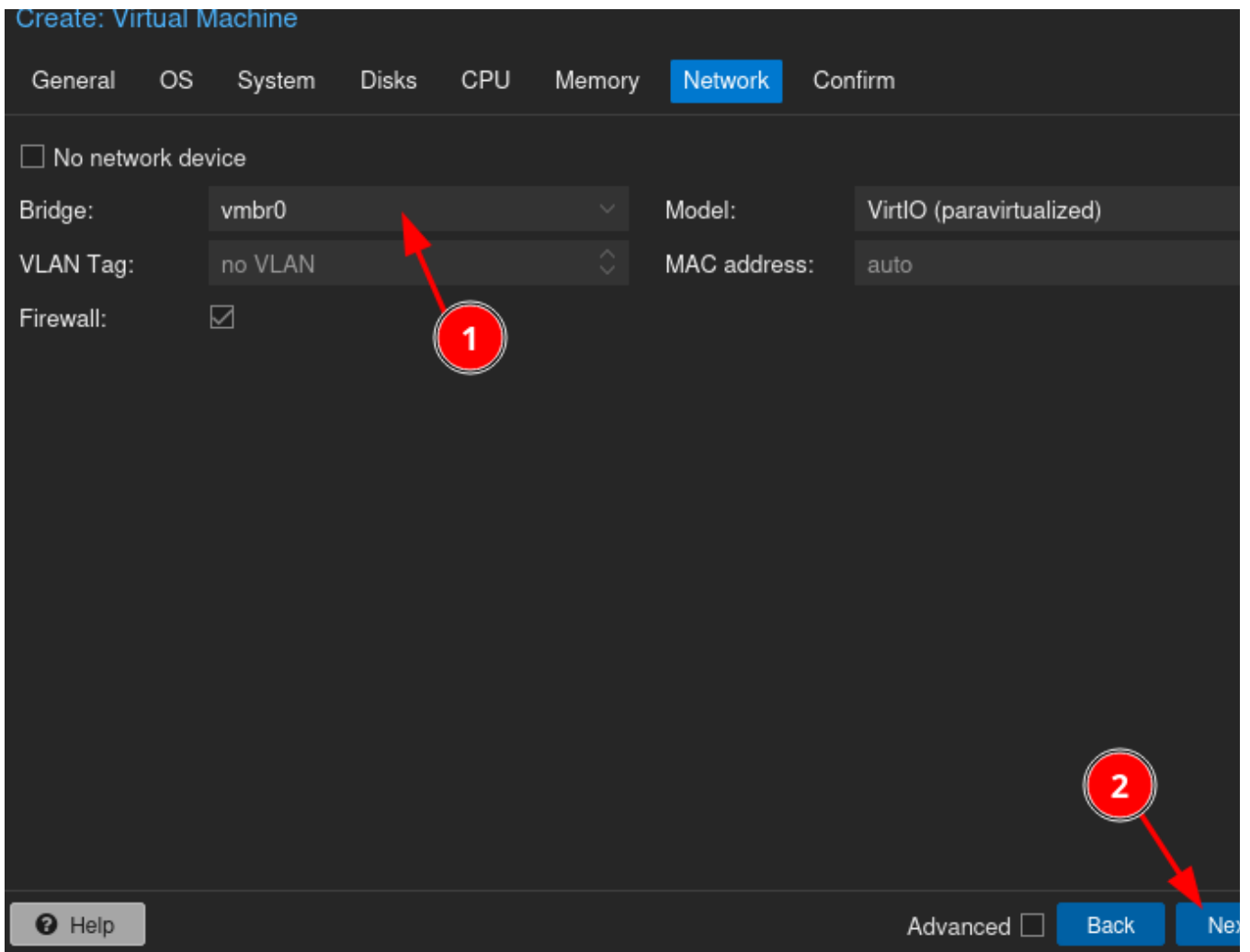
4. La partie système peut être passée
5. Disque



6. CPU



- RAM peut être laissée à 2048 (2Go)
- Réseau doit être laissé sur vmbr0 car c'est grâce à cette interface que le firewall aura accès à internet



9. Ne pas démarrer la machine à la fin de l'installation

Create: Virtual Machine

General OS System Disks CPU Memory Network **Confirm**

Key ↑	Value
cores	1
cpu	host
ide2	local:iso/pfSense-CE-2.7.2-RELEASE-amd64.iso,media=cdrom
memory	2048
name	fw-front-01
net0	virtio,bridge=vibr0,firewall=1
nodename	pve-front-01
numa	0
onboot	1
ostype	l26
scsi0	VMs:32,format=qcow2,iotthread=on
scsihw	virtio-scsi-single
sockets	2
vmid	100

Start after created

Advanced **Back** **Finish**

10. Ajouter une carte réseau à la VM

PROXMOX Virtual Environment 8.2.4

Pool View

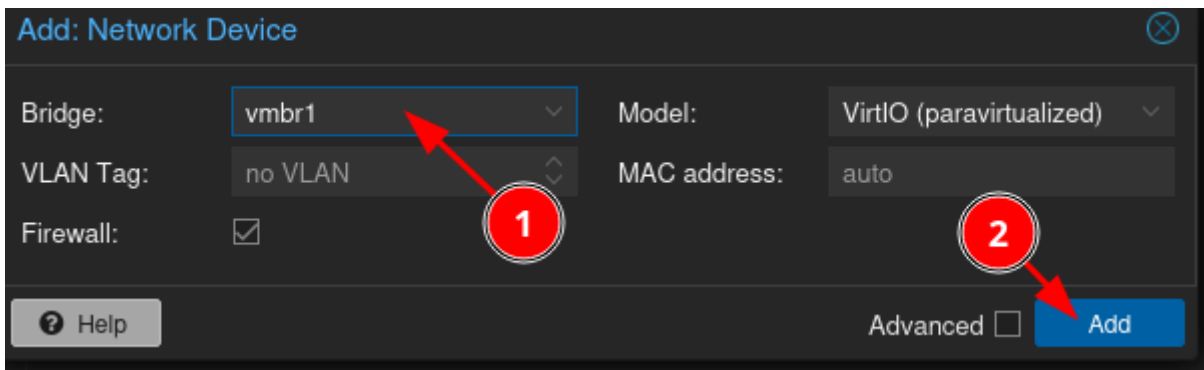
Virtual Machine 100 (fw-front-01) on node 'pve-front-01'

Start Shutdown

Summary Console Hardware Cloud-Init Options Task History Monitor Backup Replication Snapshots Firewall Permissions

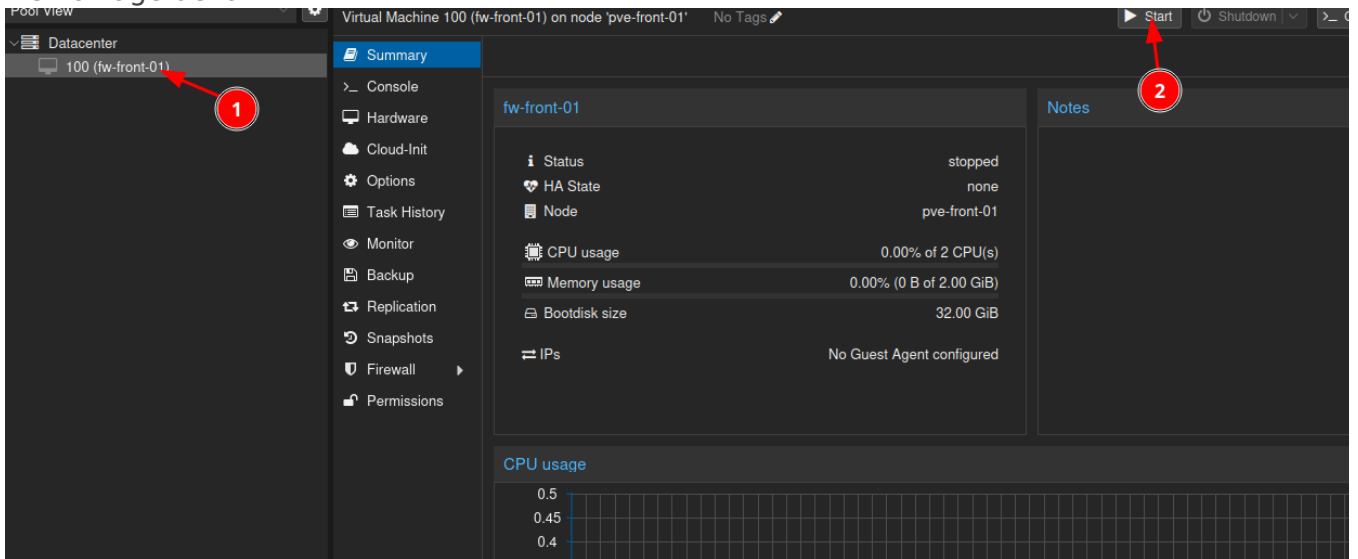
Add Remove Edit Disk Action Revert

- Hard Disk 2.00 GiB
- CD/DVD Drive 2 (2 sockets, 1 cores) [host]
- Network Device Default (SeaBIOS)
- EFI Disk Default (i440fx)
- TPM State Default
- USB Device
- PCI Device
- Serial Port
- CloudInit Drive
- Audio Device
- VirtIO RNG

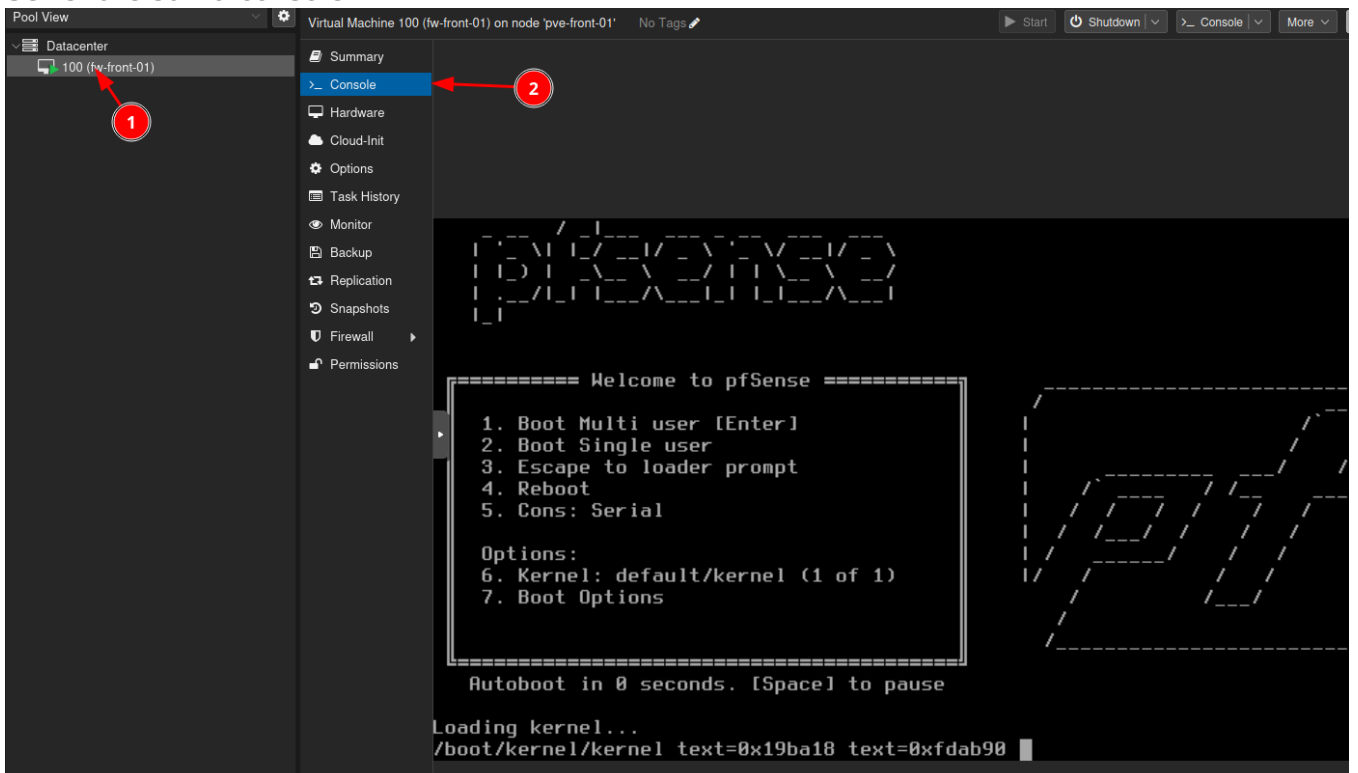


Premier démarrage:

1. Démarrage de la VM

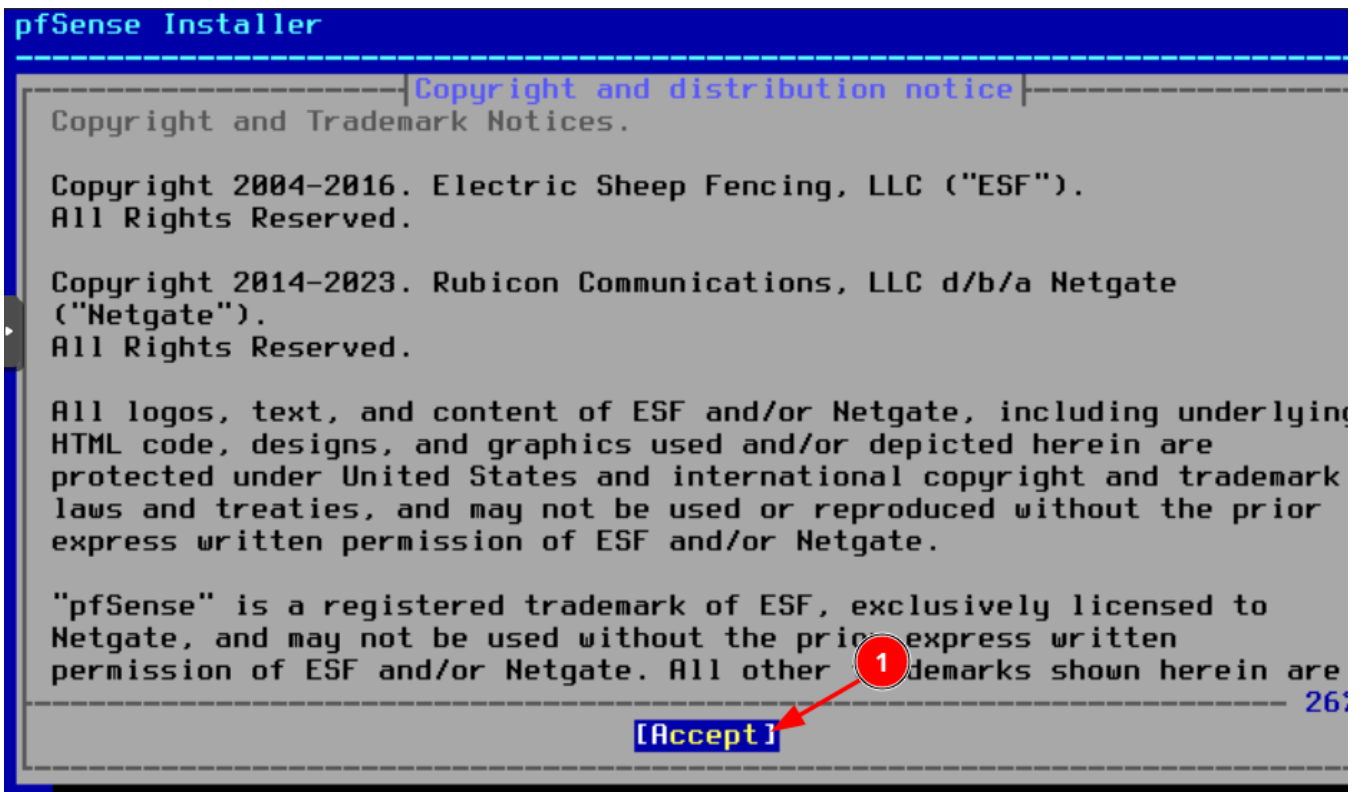


2. Se rendre sur la console

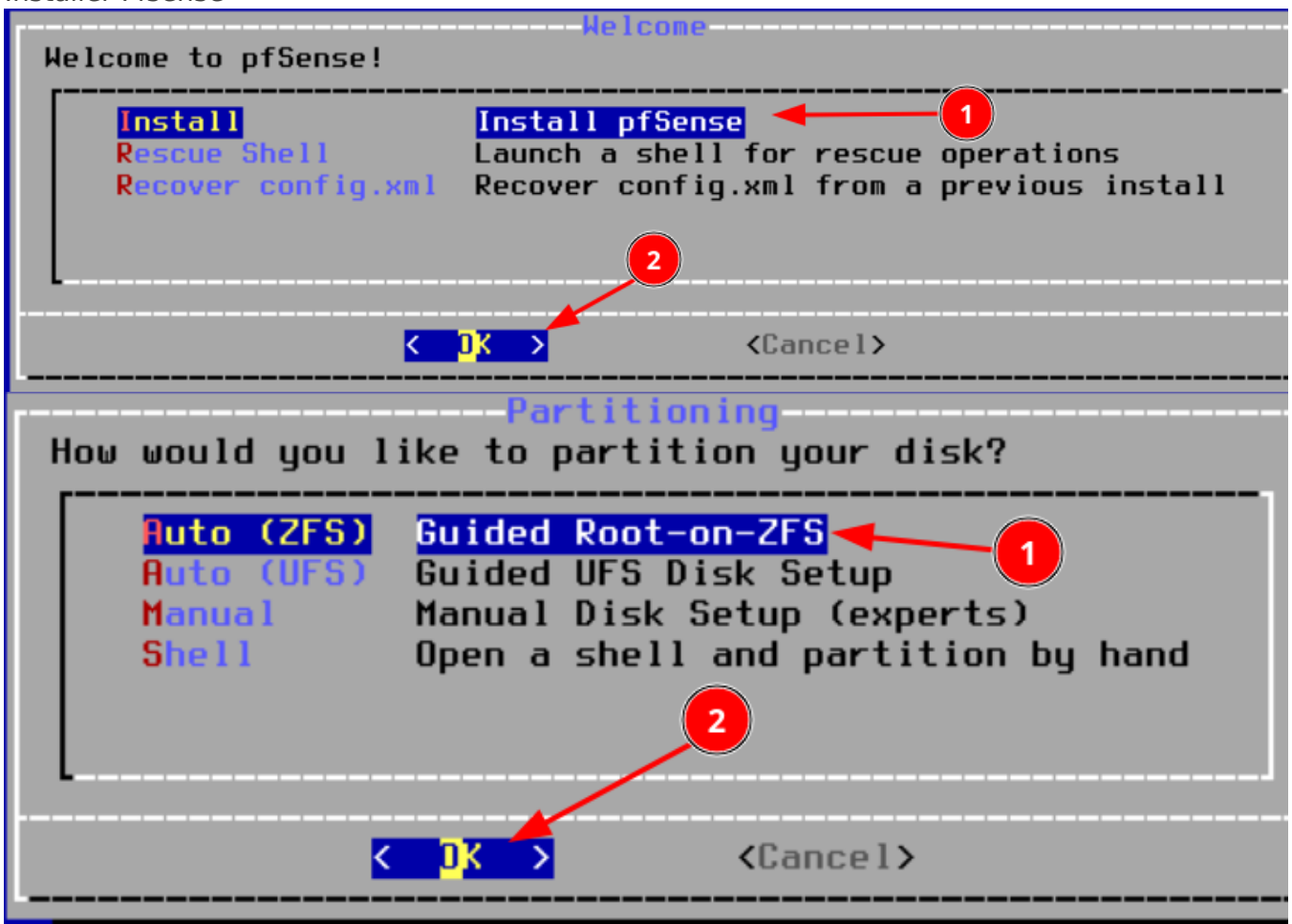


3. Attendre que l'ISO boot

4. Accepter le contrat de licence



5. Installer Pfsense



ZFS Configuration

Configure Options:

>>> Install	Proceed with Installation
T Pool Type/Disks:	stripe: 0 disks
- Rescan Devices	*
- Disk Info	*
N Pool Name	pfSense
4 Force 4K Sectors?	YES
E Encrypt Disks?	NO
P Partition Scheme	GPT (BIOS)
S Swap Size	1g
M Mirror Swap?	NO
W Encrypt Swap?	NO

<Select> **<Cancel>**

---[Use alnum, arrows, punctuation, TAB or ENTER]---

ZFS Configuration

Select Virtual Device type:

stripe	Stripe - No Redundancy
mirror	Mirror - n-Way Mirroring
raid10	RAID 1+0 - n x 2-Way Mirrors
raidz1	RAID-Z1 - Single Redundant RAID
raidz2	RAID-Z2 - Double Redundant RAID
raidz3	RAID-Z3 - Triple Redundant RAID

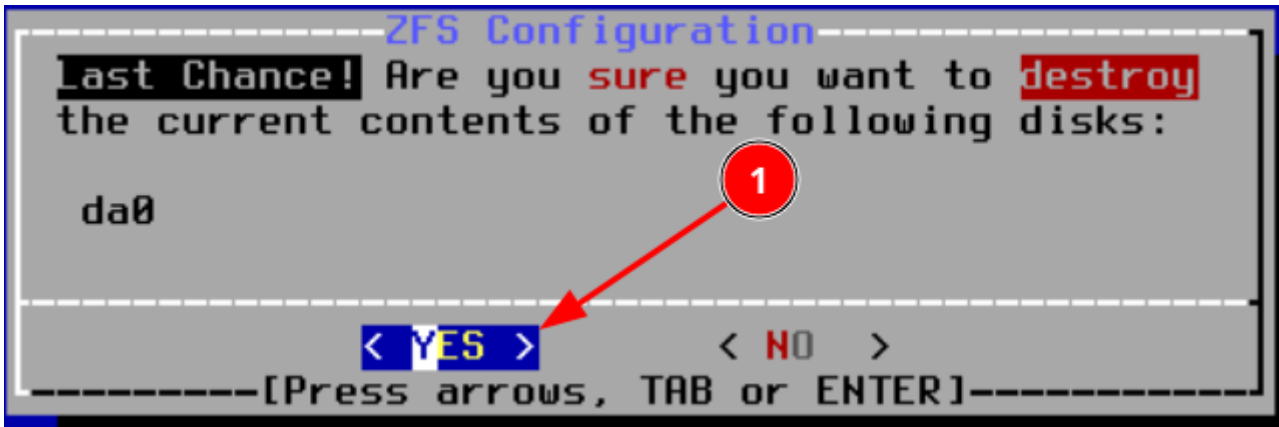
< OK > **<Cancel>**

---[Press arrows, TAB or ENTER]---

ZFS Configuration

[*] da0 QEMU QEMU HARDDISK

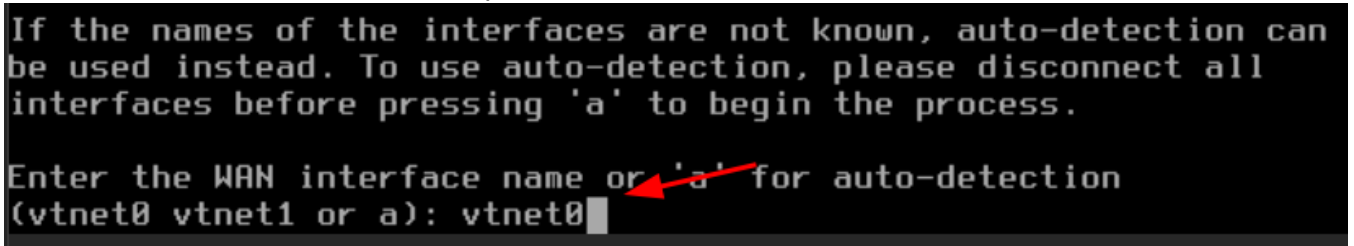
< OK > **< Back >**



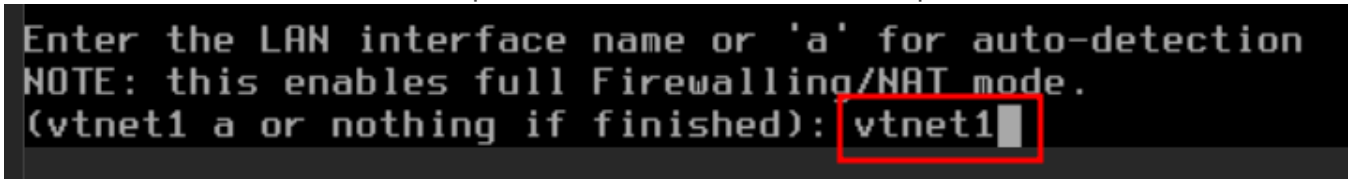
6. Attendre la fin de l'installation

Paramétrage du réseau:

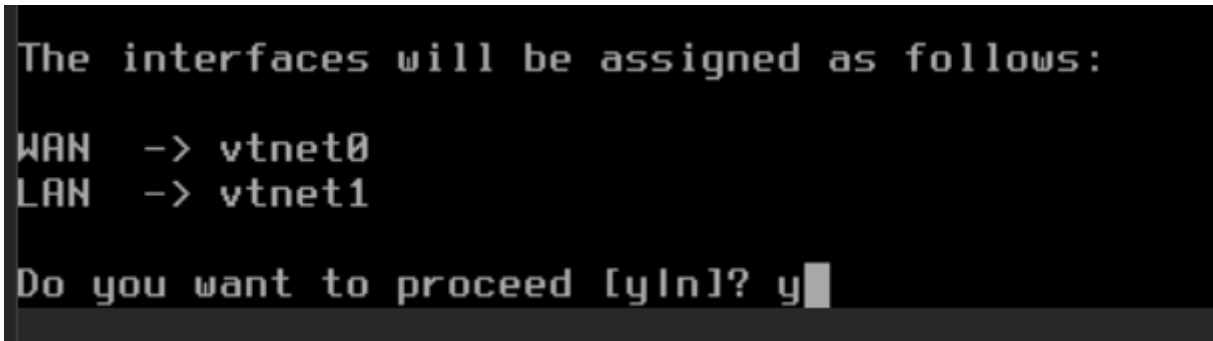
1. Sélectionner l'interface WAN, comprendre l'interface connecter à vmbr0



2. Sélectionner l'interface LAN, comprendre l'interface LAN (vmbr1 pour moi)



3. Valider



4. Paramétrer les IPs des deux interfaces, pour moi la WAN est en DHCP donc pas besoin de la configurer pour moi

- Paramétrage de l'interface LAN

FreeBSD/amd64 (pfSense.home.arpa) (ttyv0)

QEMU Guest - Netgate Device ID: 37940ed9c4e693014150

*** Welcome to pfSense 2.7.2-RELEASE (amd64) on pfSense ***

WAN (wan) -> vtnet0 -> v4/DHCP4: 192.168.1.112/24
v6/DHCP6: 2a01:e0a:2d2:d880:be24:11ff:fe0

b/64

LAN (lan) -> vtnet1 -> v4: 192.168.1.1/24

- | | |
|-----------------------------------|----------------------------------|
| 0) Logout (SSH only) | 9) pfTop |
| 1) Assign Interfaces | 10) Filter Logs |
| 2) Set interface(s) IP address | 11) Restart webConfigurator |
| 3) Reset webConfigurator password | 12) PHP shell + pfSense tools |
| 4) Reset to factory defaults | 13) Update from console |
| 5) Reboot system | 14) Enable Secure Shell (sshd) |
| 6) Halt system | 15) Restore recent configuration |
| 7) Ping host | 16) Restart PHP-FPM |
| 8) Shell | |

Enter an option: 2

Enter an option: 2

Available interfaces:

- 1 - WAN (vtnet0 - dhcp, dhcp6)
- 2 - LAN (vtnet1 - static)

Enter the number of the interface you wish to configure: 2

Available interfaces:

- 1 - WAN (vtnet0 - dhcp, dhcp6)
- 2 - LAN (vtnet1 - static)

Enter the number of the interface you wish to configure: 2

Configure IPv4 address LAN interface via DHCP? (y/n) n

Enter the number of the interface you wish to configure: 2

Configure IPv4 address LAN interface via DHCP? (y/n) n

Enter the new LAN IPv4 address. Press <ENTER> for none:

> 172.16.1.1

Subnet masks are entered as bit counts (as in CIDR notation) in pfSense.

e.g. 255.255.255.0 = 24

255.255.0.0 = 16

255.0.0.0 = 8

Enter the new LAN IPv4 subnet bit count (1 to 32):

> 26

```

Enter the new LAN IPv4 subnet bit count (1 to 32):
> 26

For a WAN, enter the new LAN IPv4 upstream gateway address.
For a LAN, press <ENTER> for none:
>

Configure IPv6 address LAN interface via DHCP6? (y/n) n

Do you want to enable the DHCP server on LAN? (y/n) n
Disabling IPv4 DHCPD...
Disabling IPv6 DHCPD...

Do you want to revert to HTTP as the webConfigurator protocol? (y/n) y

```

- Le serveur pfsense est installé

```

*** Welcome to pfSense 2.7.2-RELEASE (amd64) on pfSense ***

WAN (wan)      -> vtnet0      -> v4/DHCP4: 192.168.1.112/24
                v6/DHCP6: 2a01:e0a:2d2:d880:be24:11ff:fe0
b/64
LAN (lan)      -> vtnet1      -> v4: 172.16.1.1/26

0) Logout (SSH only)          9) pfTop
1) Assign Interfaces          10) Filter Logs
2) Set interface(s) IP address 11) Restart webConfigurator
3) Reset webConfigurator password 12) PHP shell + pfSense tools
4) Reset to factory defaults    13) Update from console
5) Reboot system              14) Enable Secure Shell (sshd)
6) Halt system                15) Restore recent configuration
7) Ping host                  16) Restart PHP-FPM
8) Shell

Enter an option:

```

Il vous suffit d'accéder à pfsense sur l'interface WAN.

Si ça ne fonctionne pas il faudra alors désactiver le firewall:

Sur la console:

```
pfctl -d
```

User: admin

mot de passe: pfsense

Revision #2

Created 2024-09-18 06:29:24 UTC by kvega

Updated 2024-09-18 08:03:21 UTC by kvega